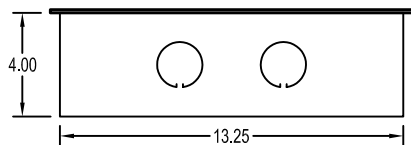
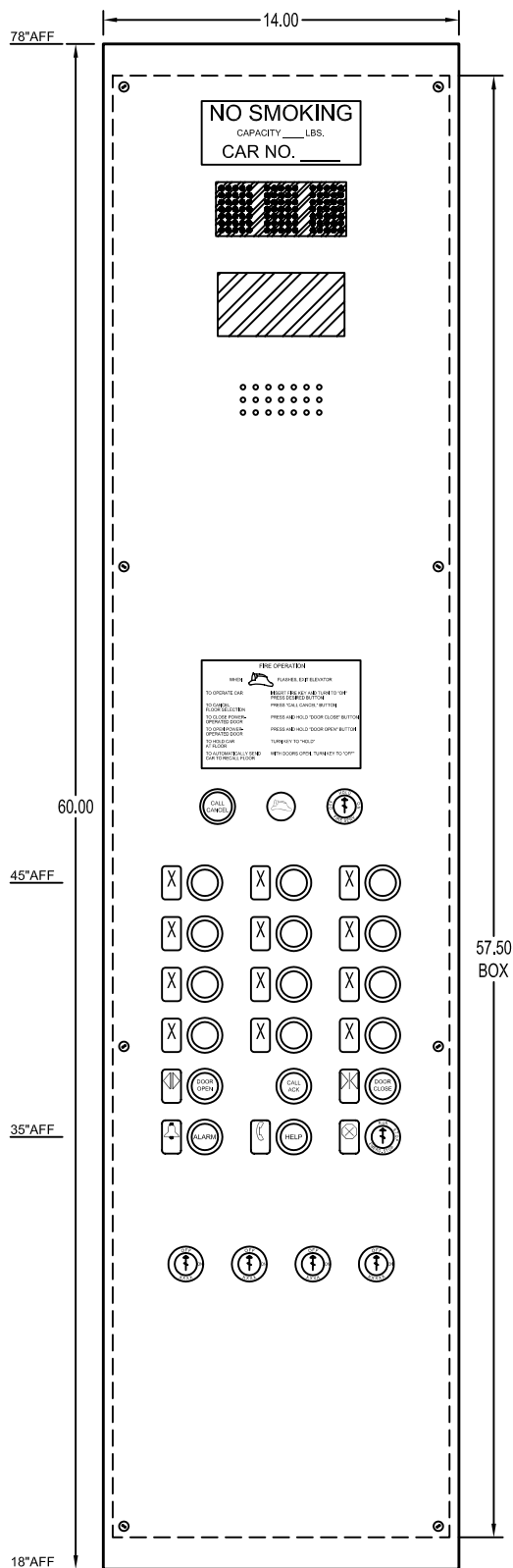


NOTE: ALL SELECTIONS AT RIGHT MUST BE FILLED IN ORDER TO PROCESS YOUR ORDER IN A TIMELY MANNER!



TCOP - CAR OPERATING PANEL
QTY. ___

COVER MATERIAL

1/8" THK ST/ST #4 BRUSH FINISH W/ BEVELED EDGE

VOLTAGE

120 V 48 V 24 V OTHER ___

PUSH BUTTON STYLE

PC1040 - PLASTIC (STD) TR1100 - ST.ST. W/ 1-3/8" BLACK HALO

FLOOR DESIGNATIONS (12 MAX): _____
(SPECIFY EGRESS FLOOR)

KEYSWITCHES

STANDARD J200 (CHOOSE ANY 4 SWITCHES)

LIGHT FAN FAN (2 SPEED)
 INDP INSP LIGHT/FAN COMBO
 OTHER _____

STOP SWITCHES

J200 KEY EMERGENCY STOP (STD) PULL STOP

BRILLE PLATES

3/4" x 1-5/16" VISIONMARK (BLACK BACKGROUND)

ST/ST CHARACTER (STANDARD)
 WHITE CHARACTER

FIRE SERVICE (FOR 2004 CODE, SEE PEP - TCOP 2004)

INCLUDES FIRE KEYSWITCH, FIRE JEWEL
AUDIBLE SIGNAL, CALL CANCEL BUTTON
 J217 - NATIONAL CODE 1996 2000
 OTHER _____
 NOT REQ'D (BLANK INSERTS FOR FUTURE USE)

DIGITAL

2" DOT MATRIX (2 CHARACTERS W/ ARROWS)
WITH PASSING SIGNAL & BUILT IN DRIVER
SIGNAL VOLTAGE: ___ VAC or VDC
(NOTE: WORKS W/ BINARY OR ONE LINE PER FLOOR)
 NO DISPLAY, PASSING CHIME ONLY

EMERGENCY LIGHT

REQUIRED

COMMUNICATIONS

INCLUDES CALL BUTTON, CALL ACK JEWEL
 EMS G3PNB HANDSFREE PHONE
 NOT REQUIRED

ENGRAVING

ALL ENGRAVING ON INLAID PLATES
 NO SMOKING
 CAPACITY ___ LBS } INCORPORATED ON 1 PLATE
 CAR NO. _____ }
 PHASE 2 FIRE INSTRUCTIONS

NOTES

HINGES: RIGHT (STD) LEFT
NO WIRING
MOUNTING SCREWS: 8-32 x 1"L. SPANNER HEAD

ADDITIONAL INFORMATION (PLEASE SPECIFY)



MONITOR CONTROLS Inc.
125 Ricefield Lane, Hauppauge, New York 11788
Phone: 631-543-4334 Fax: 631-543-4372

TOLERANCES	CUSTOMER		
DECIMAL ±.063	JOB REFERENCE		
FRACTIONAL ±1/32	CONTACT NAME	PHONE NUMBER	
ANGULAR ±1°	DRAWING NUMBER	DATE	ENGINEER
	PEP-TCOP		