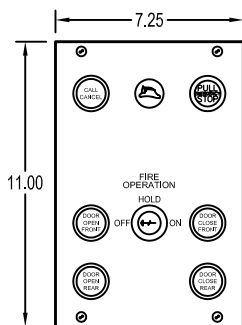
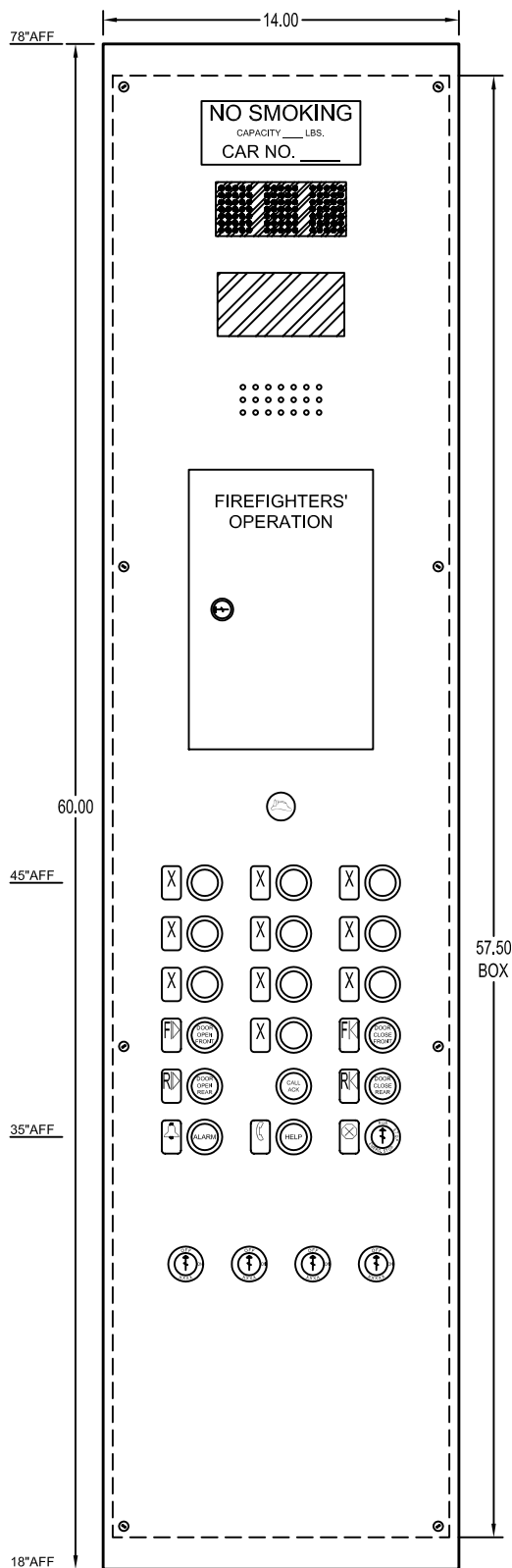
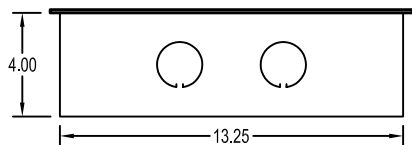


**NOTE: ALL SELECTIONS AT RIGHT MUST BE FILLED IN ORDER TO PROCESS YOUR ORDER IN A TIMELY MANNER!**



INTERIOR OF CABINET



TCOP4-R - CAR OPERATING PANEL  
QTY \_\_\_\_

**COVER MATERIAL**

1/8" THK ST/ST #4 BRUSH FINISH W/ BEVELED EDGE

**VOLTAGE**

120 V     48 V     24 V     OTHER \_\_\_\_

**PUSH BUTTON STYLE**

PC1040 - PLASTIC (STD)     TR1100 - ST.ST. W/ 1-3/8" BLACK HALO

FLOOR DESIGNATIONS (10 MAX): \_\_\_\_\_  
(SPECIFY EGRESS FLOOR)

**KEYSWITCHES**

STANDARD J200 (CHOOSE ANY 4 SWITCHES)

LIGHT     FAN     FAN (2 SPEED)  
 INDP     INSP     LIGHT/FAN COMBO  
 OTHER \_\_\_\_\_

**STOP SWITCHES**

J200 KEY EMERGENCY STOP (STD)     PULL STOP

**BRILLE PLATES**

3/4" x 1-5/16" VISIONMARK (BLACK BACKGROUND)

ST/ST CHARACTER (STANDARD)  
 WHITE CHARACTER

**FIRE SERVICE - 2004 CODE**

(FOR PRE-2004 FIRE CODES SEE DRAWING PEP - TCOP-R)

INCLUDES FIRE KEYSWITCH, FIRE JEWEL, AUDIBLE SIGNAL, CALL CANCEL, DOOR OPEN / CLOSE AND PULL STOP BUTTONS W/ PHASE II INSTRUCTIONS BEHIND LOCKED FIRE CABINET DOOR

J217 - NATIONAL CODE  
 OTHER \_\_\_\_\_

**DIGITAL**

2" DOT MATRIX (2 CHARACTERS W/ ARROWS) WITH PASSING SIGNAL & BUILT IN DRIVER  
SIGNAL VOLTAGE: \_\_\_\_ VAC or VDC  
(NOTE: WORKS W/ BINARY OR ONE LINE PER FLOOR)  
 NO DISPLAY, PASSING CHIME ONLY

**EMERGENCY LIGHT**

REQUIRED

**COMMUNICATIONS**

INCLUDES CALL BUTTON, CALL ACK JEWEL  
 EMS G3PNB HANDSFREE PHONE  
 NOT REQUIRED

**ENGRAVING**

ALL ENGRAVING ON INLAID PLATES  
 NO SMOKING  
 CAPACITY \_\_\_\_ LBS } INCORPORATED ON 1 PLATE  
 CAR NO. \_\_\_\_

**NOTES**

HINGES:     RIGHT (STD)     LEFT  
NO WIRING  
MOUNTING SCREWS: 8-32 x 1"L. SPANNER HEAD

**ADDITIONAL INFORMATION (PLEASE SPECIFY)**



**MONITOR CONTROLS Inc.**  
125 Ricefield Lane, Hauppauge, New York 11788  
Phone: 631-543-4334 Fax: 631-543-4372

TOLERANCES	CUSTOMER		
DECIMAL ±.063	JOB REFERENCE		
FRACTIONAL ±1/32	CONTACT NAME	PHONE NUMBER	
ANGULAR ±1'	DRAWING NUMBER	DATE	ENGINEER
	PEP-TCOP 2004-R		